

# Structural and Hygrothermal Field Monitoring of Thick Continuously Insulated Wall Assemblies Utilized in a Multi-Story Residential Building

Gary Parsons – The Dow Chemical Company  
Jeff Hansbro -The Dow Chemical Company  
Craig Buck -The Dow Chemical Company  
Scott Croasdale -JRS Engineering  
Joel Schwartz -JRS Engineering



## Agenda

- **Continuous Insulation**
- **Vancouver BC Case Study**
- **Retrofit Structural Design**
- **Measurements**
- **Conclusions**

## Continuous Insulation Hypothesis

- A ci rain screen wall system with:
  - 7/8" Z-girts located 16" oc
  - Attached outboard of insulation with 4 1/2" #10 self tapping corrosion resistant screws every 6" oc
- Provides a structurally robust wall
- Dimensionally stable
- Complies with ASHRAE 90.1

## Vancouver BC Case Study – Before



### Original Wall System

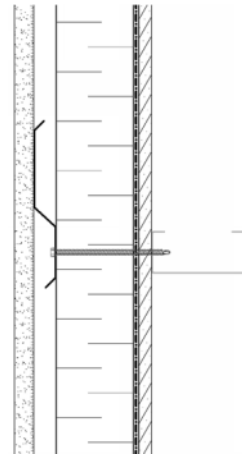
- Cement stucco with wire lath
- Semi-rigid fiberglass insulation (~ one inch thick)
- 3 1/2 inch steel studs with fiberglass batt insulation infill
- Polyethylene air/vapor barrier
- 1/2 inch interior drywall

## Vancouver BC Case Study – After



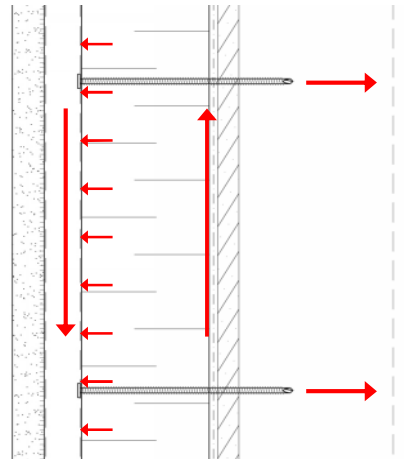
### New (Rehabilitated Wall System)

- 7/8 inch acrylic stucco on paper backed lath
- 7/8 inch Z-girts at 16 in oc fastened with self-tapping screw fasteners at 6 in oc
- 3 in Type 4 rigid insulation (R15) with taped joints
- SA Membrane
- 1/2 inch fiberglass faced exterior gypsum sheathing
- Existing 3 1/2 inch steel studs
- Existing 1/2 inch interior drywall



## Structural Design

- Wind and gravity loads are transferred from the exterior through the vertical Z girts to the insulation and back up wall
- Rigid girt spreads gravity and wind load onto rigid insulation
- Gravity load puts a tension load on the fastener since rotation is constrained by insulation (fastener cannot rotate unless foam compresses) and a shear load
- Wind and gravity put a compression load on the rigid insulation or tension load on fastener



u9

## Slide 6

---

u9

Scott to summarize into 1 or 2 slides

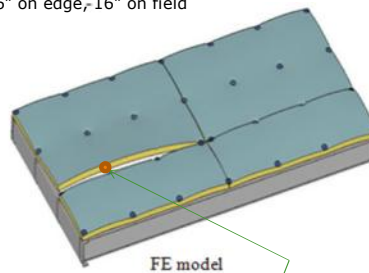
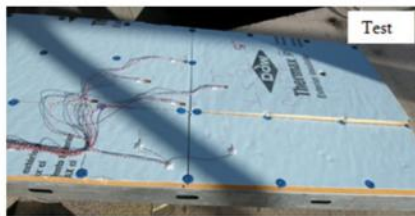
u369852, 29/02/2012

## Background Work

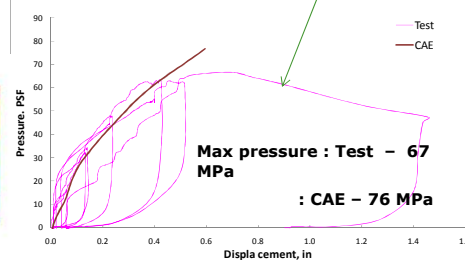
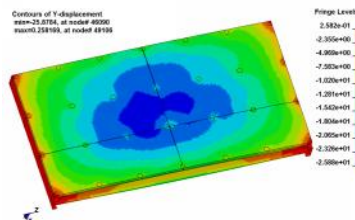
- **Why are we comfortable doing this?**
- **What has Dow done in the past?**
  - *Dow/Knight Kishwaukee College (see case study) plus others in design and construction.*
  - *"Strategies to Successfully Meet the New Energy Codes Using Foam Plastic Continuous Insulation" Jeff Hansbro, Dow Chemical*
  - *"Requirements for attaching Thermax ci Exterior Insulation and 3 Coat Stucco Cladding to Steel Stud Walls" TER Report – Dow Building Solutions & Jay Crandall, ARES Consulting*
- **What has JRS done in the past?**
  - *Burien Towne Square in Washington State, Several wood framed buildings, similar roof systems (metal over continuous XPS or polyiso), testing with Knight Wall*

## Validated Finite Element Modeling

1.55" PIR ci exterior insulation - Fastener Spacing : 16" on edge, 16" on field



Failure criteria for CAE – max. displacement  $\approx 1"$  at any point on the insulation (air leakage results in pressure drop in test)



## Research Questions

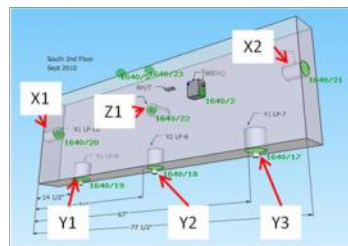
- **What is the dimensional performance of a retrofit wall system designed with only cladding attachment screw penetrations through the insulation?**
- **What is the hygrothermal performance of the system?**

## Measurement – Instruments

### Displacement



BI Technologies  
Model BI-404  
linear  
displacement  
sensors .  
Accuracy 0.085  
mm +/- 5%



### Hygrothermal



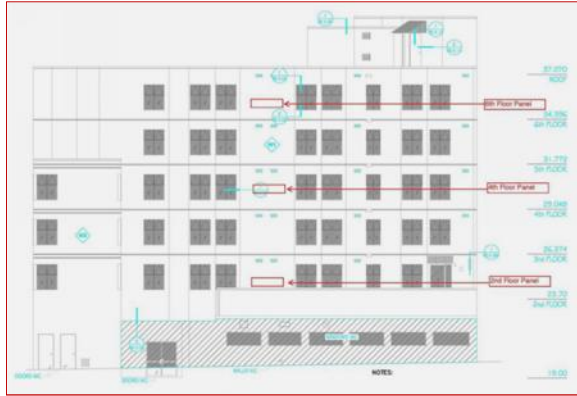
Relative Humidity Sensor  
Humirel HTM2500



CANTHERM MF52 Thermistor



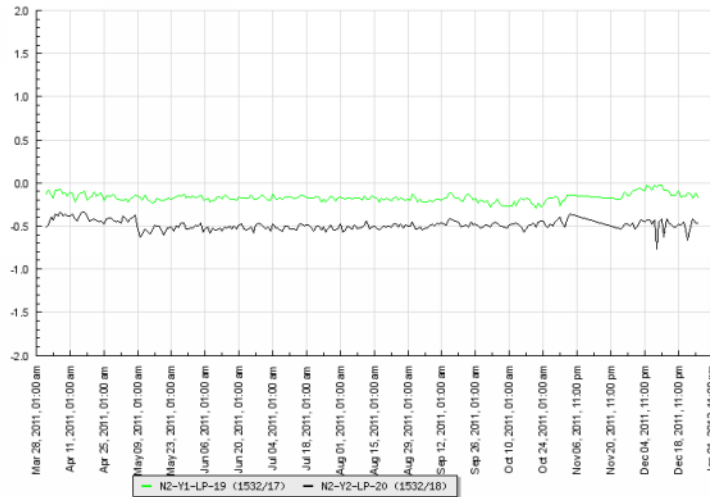
## Measurement-Location and Installation



N Elevation

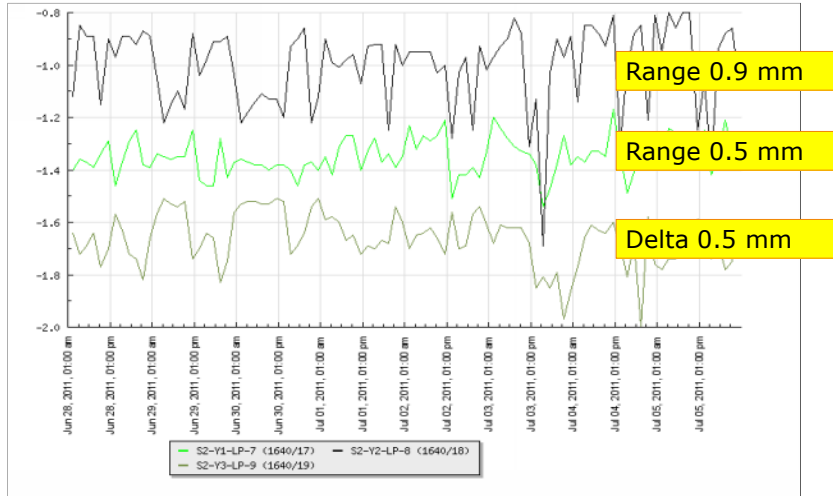


## Y Direction Measurements



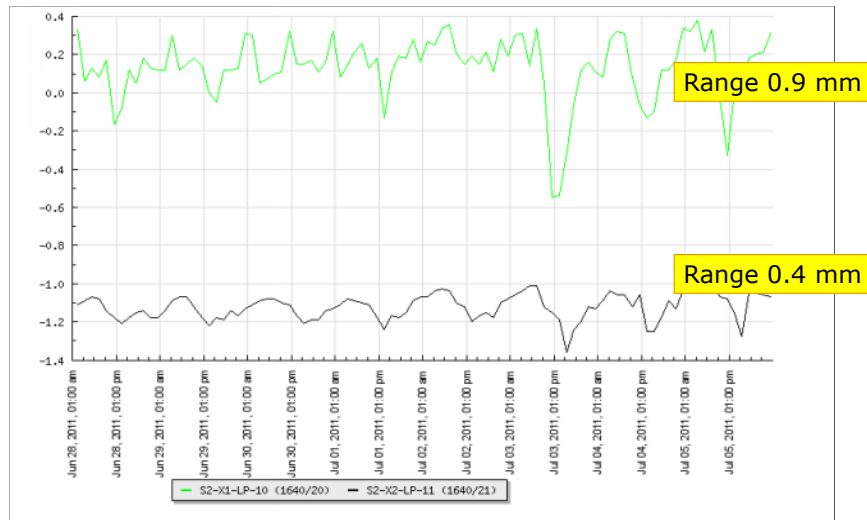
Vertical Displacement (2<sup>nd</sup> floor, North)

## Y Direction Measurements



**Vertical Displacement (2nd floor, South)**

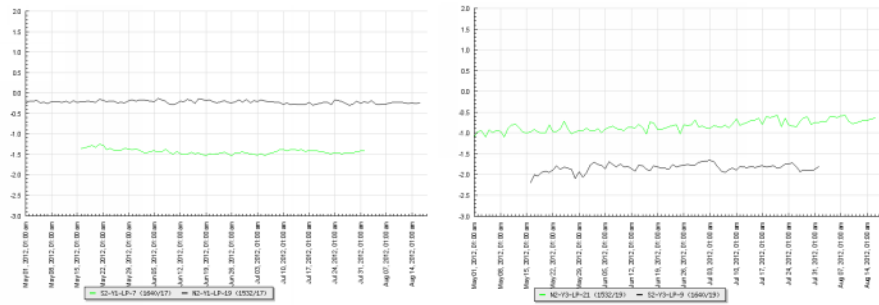
## X Direction Measurements



**2<sup>nd</sup> floor, South**



## North Facade vs. South Facade

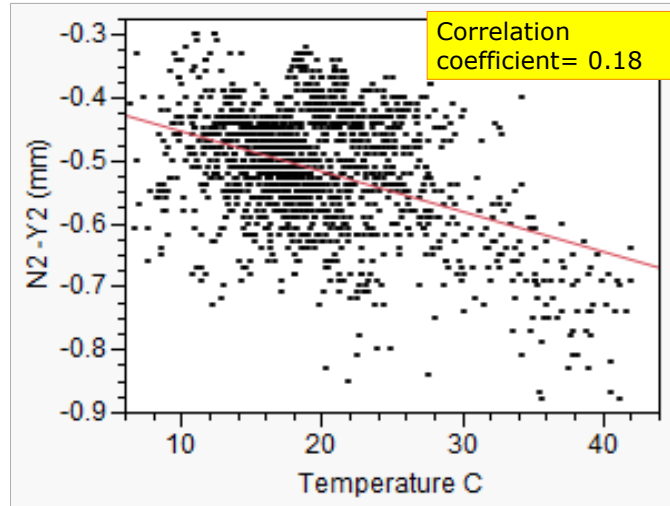


**Vertical Displacement Measurements of N and S Panels**

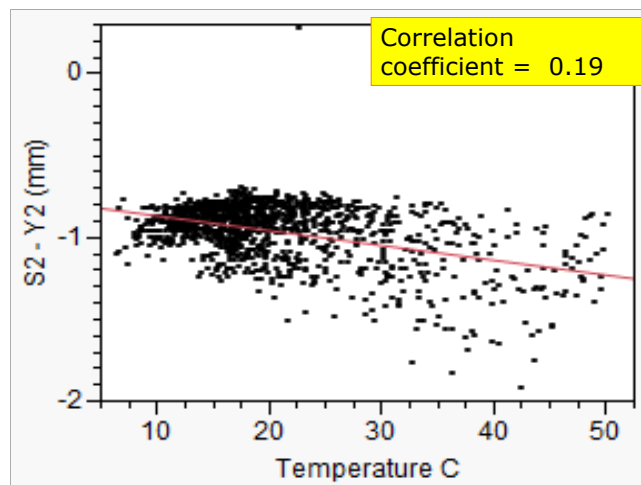
## Thermal Expansion, Correlation to CTE

Material	Coefficient of Thermal Expansion (m/m K)	Coefficient of Thermal Expansion (in/in F)	$\Delta T=35^{\circ}\text{C}$ $\Delta L$ over 1.2m (48")	$\Delta T=22^{\circ}\text{C}$ $\Delta L$ over 1.2m (48")
Mortar (Stucco)	$(7.3\text{-}13.5) \times 10^{-6}$	$(4.1\text{-}7.5) \times 10^{-6}$	0.3mm-0.57mm	0.19mm-0.36mm
Steel	$13.0 \times 10^{-6}$	$7.2 \times 10^{-6}$	0.54mm	0.34mm
XPS, Polyiso, EPS	$62.7 \times 10^{-6}$	$35 \times 10^{-6}$	2.63mm	1.65mm

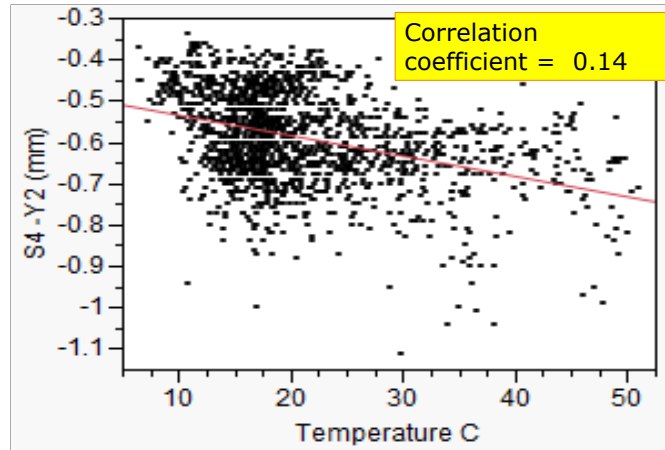
## Displacement vs Temperature



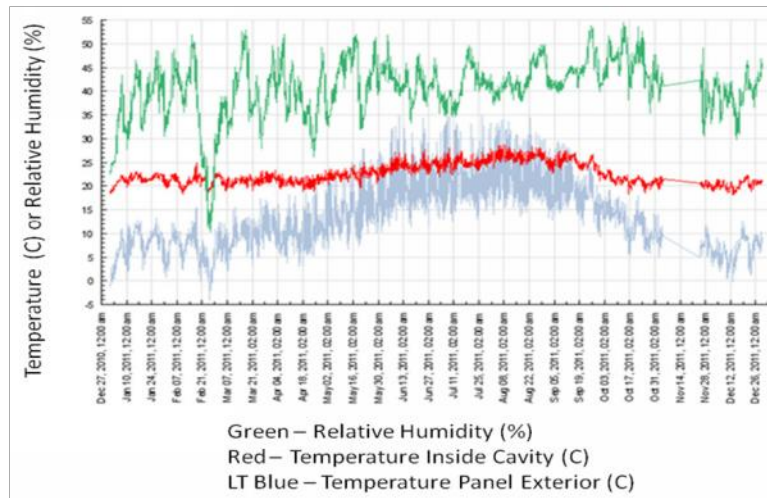
## Displacement vs Temperature



## Displacement vs Temperature

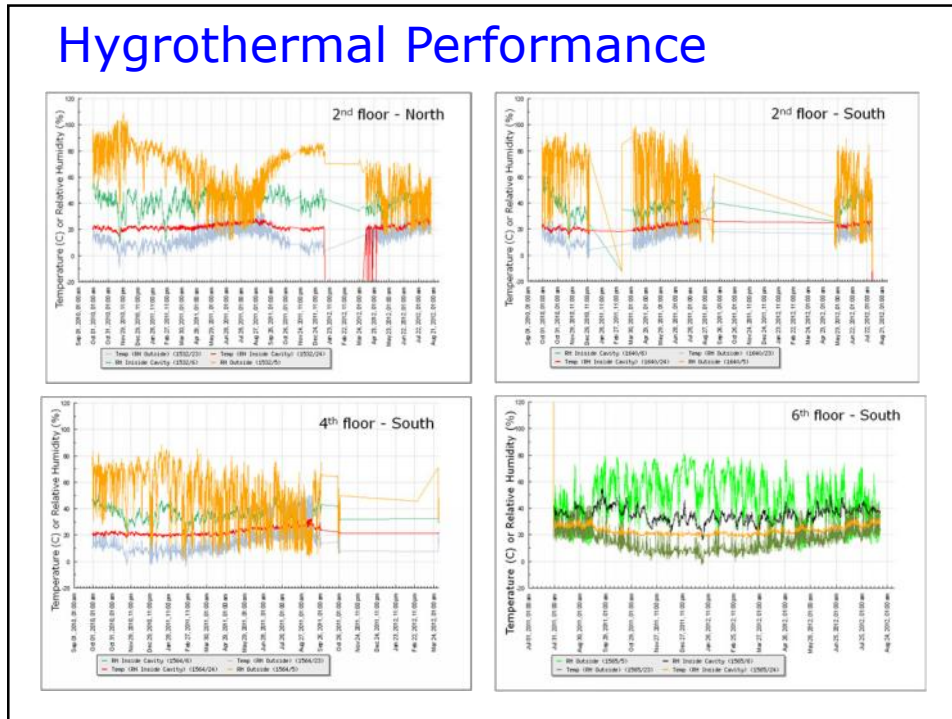


## Hygrothermal Performance



North Wall

## Hygrothermal Performance



## Conclusions

- The ci rain screen system is a structurally robust wall and complies with ASHRAE 90.1.
- X,Y,Z displacement ranges are negligible and not dependent on measurement location.
- Temperature-displacement correlation is poor.
- Hygrothermal performance confirmed to be good, with low condensation risk.
- No stucco performance problems have been reported to date.

## Future Work

- **More thorough understanding of temperature observations**
- **Research expected movement of foamed plastic insulation due to differential temperature conditions and under restraint.**
- **Establish structural design parameters for designing rigid foam to support cladding and to withstand compression and bending loads that will vary depending on the design approach taken.**

**Thank You**